

MUNICIPAL DISTRICT OF BRAZEAU NO. 77

BY-LAW NO. 182-93

BEING A BY-LAW OF THE MUNICIPAL DISTRICT OF BRAZEAU NO. 77, IN THE PROVINCE ON ALBERTA, TO DECLARE THE COMMUNITY OF VIOLET GROVE A HAMLET.

WHEREAS, Section 1(f) of the Municipal Government Act, being Chapter M-26, Revised Statutes of Alberta, 1980 and amendments thereto interprets a "hamlet" to mean:

"an unincorporated community consisting of a group of 5 or more occupied dwellings, a majority of which are on parcels of less than 1,850 square metres, with a defined boundary, a distinct name and the existence of or provision for non-residential uses, that is designated as a hamlet by the council for the municipal district in which the community is located or by the Minister; or

any area declared to be a hamlet by the Minister before July 1, 1986, unless the declaration is revoked by the Minister."

AND WHEREAS, the community of Violet Grove conforms with the above interpretation; and

WHEREAS, the Council of the Municipal District of Brazeau No. 77 deems it expedient to declare the community of Violet Grove as a hamlet.

THEREFORE BE IT ENACTED that in accordance with Section 112 of the Municipal Government Act, being Chapter M-26, Revised Statutes of Alberta, 1980 and amendments thereto that the unincorporated community and area as shown on the sketch attached to and forming part of this By-Law, more particularly described as follows:

Part of the South half of Section Twenty Five (25), Township Forty Eight (48), Range Eight (8), West of the Fifth Meridian.

Part of the North East and North West quarter Sections Twenty Four (24), Township Forty Eight (48), Range Eight (8), West of the Fifth Meridian.

Part of the South East quarter Section Twenty Five (25), Township Forty Eight (48), Range Eight (8), West of the Fifth Meridian.

Be declared as the Hamlet of Violet Grove.

READ a first time this 8th day of April, A.D., 1993.

READ a second time this 8th day of April, A.D., 1993.

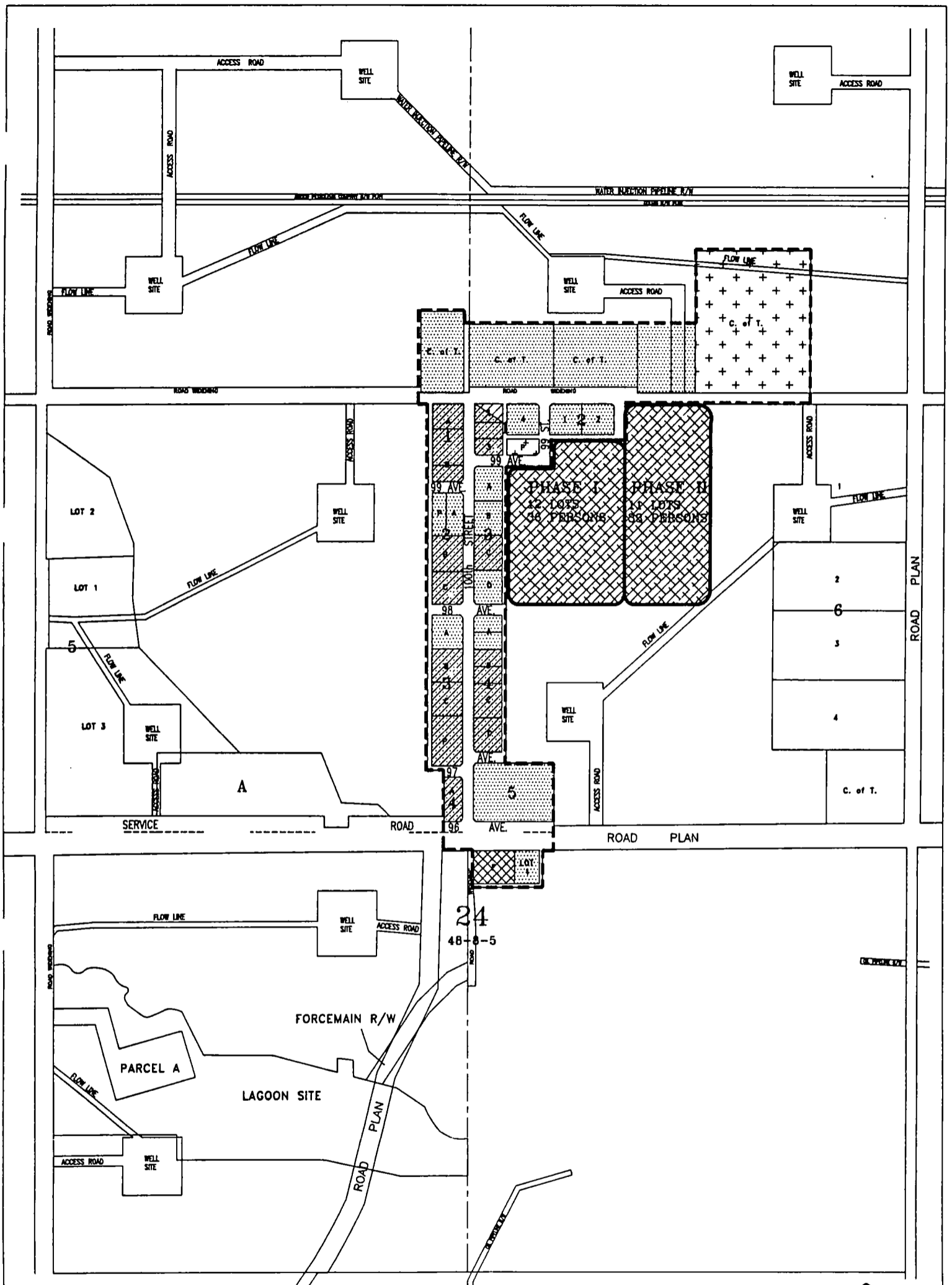
READ a third time by unanimous consent of the Councillors present and finally passed this 8th day of April, A.D., 1993.



REEVE




ACTING MUNICIPAL SECRETARY





Hamlet of Violet Grove Future Land Use Concept and Development Staging

Legend

 Residential

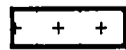
 Mobile Home Residential

 Commercial

 Hamlet Boundary

Drawing not to Scale

 Industrial

 Public / Institutional


 Future Expansion Areas / Vacant



FIGURE 4