

# Agriculture Equipment Rental Program



Agricultural Services  
Department  
Phone: 780-542-7777  
Location: 7401 Twp Rd 494

## Livestock Rentals

### Calf tipping table

- ✓ 2 tables available: left or right side
- ✓ 250 lb – 500 lb
- ✓ 2" ball hitch
- ✓ Towing speed not to exceed 80 km/hr
- ✓ \$30/day
- ✓ \$50 damage deposit

Right Hip – Unit A9



Left Hip – Unit A20



### Cattle scale

- ✓ Digital scale
- ✓ 2 scales available
- ✓ Hook to 12 volt battery (user to supply)
- ✓ 2" ball hitch
- ✓ Towing speed not to exceed 80 km/hr
- ✓ \$30/day
- ✓ \$50 damage



Unit A17



Unit A71



---

### Cattle squeeze

- ✓ Tuff squeeze chute
- ✓ Self-catch head gate
- ✓ Bi-fold gate and palpation cage
- ✓ Side and bottom doors open fully
- ✓ 12'9" long x 3'10" wide x 7'2" high
- ✓ 2" ball hitch
- ✓ Towing speed not to exceed 80 km/hr
- ✓ \$30/day
- ✓ \$50 damage deposit

Unit A76



---

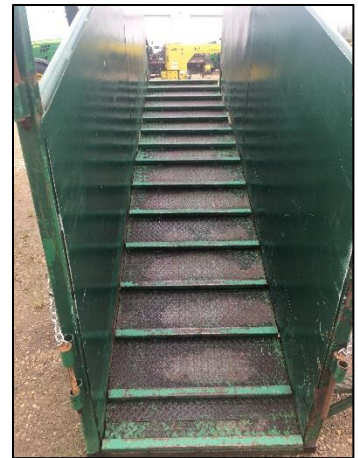
### Loading chute

- ✓ 2 units available (wooden floor or metal floor)
- ✓ Catwalk on each unit
- ✓ 2" ball hitch
- ✓ Towing speed not to exceed 80 km/hr
- ✓ \$30/day
- ✓ \$50 damage deposit

Unit A06 (wooden floor)



Unit A60 (metal floor)



---

**Corral panels**

- ✓ Includes 10 panels & 1 gate
- ✓ Each panel is 9'4" long
- ✓ 2" ball hitch
- ✓ Towing speed not to exceed 80 km/hr
- ✓ \$30/day
- ✓ \$50 damage deposit

Unit A21



---

**RFID tag reader**

- ✓ Gallagher HRD3 hand held tag reader & data collector
- ✓ 2 units available
- ✓ \$25/day
- ✓ \$50 damage deposit



---

**Land & Soil Rentals****Back pack sprayer**

- ✓ 4 sprayers available
- ✓ 4 US gallons (15 litres)
- ✓ Hand wand
- ✓ Adjustable back pack straps
- ✓ \$5/day
- ✓ \$50 damage deposit



---

**ATV sprayer**

- ✓ 25 US gallons (95 litres)
- ✓ Hook to 12 volt battery (user to supply)
- ✓ Hand wand
- ✓ Boom width 7'4"
- ✓ \$25/day
- ✓ \$50 damage deposit

Unit R1



## Land & Soil Rentals

### ATV sprayer

- ✓ 24 US gallons (90 litres)
- ✓ Hook to 12 volt battery (user to supply)
- ✓ Hand wand only
- ✓ \$25/day
- ✓ \$50 damage deposit

Unit R3



### ATV sprayer

- ✓ 25 US gallons (95 litres)
- ✓ Hook to 12 volt battery (user to supply)
- ✓ Hand wand
- ✓ Boom width 6'10"
- ✓ \$25/day
- ✓ \$50 damage deposit

Unit R4



### ATV sprayer

- ✓ 25 US gallons (95 litres)
- ✓ Hook to 12 volt battery (user to supply)
- ✓ Hand wand
- ✓ Boom width 3'3"
- ✓ \$25/day
- ✓ \$50 damage deposit

Unit R5



### UTV sprayer

- ✓ 60 US gallons (227 litres)
- ✓ Hook to 12 volt battery (user to supply)
- ✓ Hand wand
- ✓ Boom width 3'3"
- ✓ Spray pattern is 15' (4.5 m)
- ✓ \$35/day
- ✓ \$50 damage deposit

Unit R2

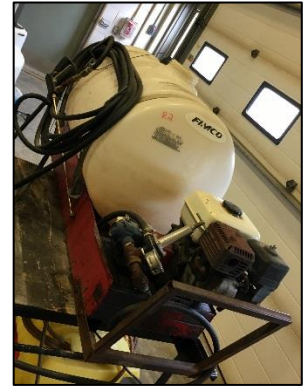


## Land & Soil Rentals

### Slip-in truck box sprayer

- ✓ 60 US gallons (227 litres)
- ✓ Gas engine
- ✓ Hand wand only
- ✓ \$35/day
- ✓ \$50 damage deposit

Unit A13



### Slip-in truck box sprayer

- ✓ 118 US gallons (450 litres)
- ✓ Gas engine
- ✓ Hand wand
- ✓ Receiver hitch to hold the 13' poly boom
- ✓ Tank is mounted on a 4' x 3' skid
- ✓ \$35/day
- ✓ \$50 damage deposit

Unit A72



### Pull-type sprayer

- ✓ 2 units available
- ✓ 300 US gallons (1134 litres)
- ✓ Hook to 12 volt battery (user to supply)
- ✓ Hand wand
- ✓ Boomless, with Tee Jet Tip
- ✓ Spray pattern is 30' (9m)
- ✓ Clevis (pin) hitch
- ✓ \$35/day
- ✓ \$50 damage deposit

Units A34 & A58

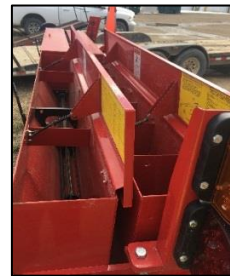


## Land & Soil Rentals

### Brillion seeder

- ✓ Settings for grasses/legumes
- ✓ Digital acre meter
- ✓ 10' drum; 13' wide tire to tire
- ✓ Clevis (pin) hitch
- ✓ Suggested to use a tractor 1.5x the weight of the seeder
- ✓ Seeder weight is 1137kg or 2527lbs
- ✓ \$100/day
- ✓ \$100 damage deposit

Unit A73



### Hand seeder

- ✓ 6 hand seeders available
- ✓ No charge for 3 days, then \$5/day thereafter
- ✓ \$30 damage deposit



### Fertilizer Spreader

- ✓ Trailer mounted twin disc spreader
- ✓ Agrex Maxi 4000
- ✓ 5 Ton
- ✓ 540 PTO
- ✓ Clevis (pin) hitch with swivel
- ✓ #4 flat plug with adaptors for:  
6 round, 7 blade, 4 round
- ✓ Roll tarp
- ✓ 110 Tractor HP requirement
- ✓ \$100/day
- ✓ \$100 damage deposit

Unit A77



## Land & Soil Rentals

### Electronic bale scale

- ✓ Hook to 12 volt battery (user to supply)
- ✓ 2" ball
- ✓ \$30/day
- ✓ \$50 damage deposit



### Sampler / Probe

- ✓ No charge for 3 days, then \$5/day thereafter
- ✓ \$30 damage deposit

#### Soil Sampler



#### Feed Probe



### Bran bait applicator

- ✓ Used for grasshopper control
- ✓ Holds 30 lbs (14 kg) of Eco Bran (wheat bran infused with carbaryl - user to supply)
- ✓ Spread distance 15-18' (4.5 – 5.5m)
- ✓ Mount on ATV (30 lbs)
- ✓ 12 volt fan motor to plug into ATV power outlet
- ✓ \$15/day
- ✓ \$50 damage deposit



## Sign Rentals

### Cattle drive

- ✓ Four signs available
- ✓ Includes stand to mount sign
- ✓ No charge for 3 days, then \$25/day thereafter
- ✓ \$50 damage deposit per sign



### Smoke

- ✓ Two signs available
- ✓ Includes stand to mount sign
- ✓ No charge for 3 days, then \$25/day thereafter
- ✓ \$50 damage deposit per sign



### Agriculture haul route

- ✓ Two signs available
- ✓ Includes stand to mount sign
- ✓ No charge for 3 days, then \$25/day thereafter
- ✓ \$50 damage deposit per sign



## Trap Rentals

### Skunk

- ✓ Live traps
- ✓ 2 large white traps (2½' long x 1' wide x 1' high)
- ✓ 2 small white traps (2' long x 9" wide x 9" high)
- ✓ 2 small grey traps (2' long x 10" wide x 1' high)
- ✓ User is responsible for relocation of animal after trapping
- ✓ \$10 for 7 days
- ✓ \$50 damage deposit





## Trap Rentals

### Porcupine (may also be used for fox)

- ✓ Wire mesh live trap
- ✓ 3½' long x 15" wide x 15" high
- ✓ User is responsible for relocation of animal after trapping
- ✓ \$20 for 7 days
- ✓ \$50 damage deposit



### Marmot (Groundhog / Woodchuck)

- ✓ Wire mesh live trap
- ✓ 2' long x 7" wide x 7" high
- ✓ 2 traps available
- ✓ User is responsible for relocation of animal after trapping
- ✓ \$10 for 7 days
- ✓ \$50 damage deposit



### Squirrel

- ✓ Wire mesh live trap
- ✓ 1½' long x 6" wide x 7" high
- ✓ 5 traps available
- ✓ User is responsible for relocation of animal after trapping
- ✓ \$10 for 7 days
- ✓ \$50 damage deposit

