

Brazeau County News

November/December 2010



Keeping The Residents of Brazeau County Informed



Photo: KeithAhlstrom.com

After a wet Summer, ponds and slough's in Brazeau County are full going into the Winter months. So sharpen up your ice skates now and be ready for when it's solid and safe. It should make for excellent Winter fun.



Tel: 780-542-7777

Fax: 780-542-7770

Box 77 5516 Industrial Road

Drayton Valley, AB T7A 1R1

www.brazeau.ab.ca

Reeve's Report



As we edge our way into winter and look forward to the holiday season and spending time with family and friends, we are also welcoming two new faces on Brazeau County

Council. Shirley Mahan in Division 1 and Kara Westerlund in Division 4 bring energy and a new perspective to our council team which will help make the next three years exciting ones.

I would like to thank Pat Vos and Maureen Schwab for the hard work and dedication that they have shown in serving the residents and businesses of Brazeau County.

As winter nips at our toes we enter our budget deliberations at the County. It is always our goal at Brazeau County to maintain fiscal responsibility and to be cautious stewards of public funds.

Our next step in annexation negotiations continues with the Municipal Government Board hearings starting November 15th.

If you have any questions or concerns regarding County business, please feel free to contact myself or your division Councillor – we are here to serve you.

Brazeau County wishes you a very Merry Christmas and a Happy New Year.

Sincerely,

Wes Tweedle

Home: 542-3324 Cell: 898-2345

Email: wesjtweedle@telus.net



Shirley Mahan
Division 1 Councillor
Work: 542-5334
Cell: 542-0614



Bob Kitching
Division 2 Councillor
Home: 542-3259
bbranch@teluspanet.net



Dawn Konelsky
Division 3 Councillor
Home: 542-5066
Cell: 514-8998
konelsky@telusplanet.net



Kara Westerlund
Division 4 Councillor
Home: 898-4561



Anthony Heinrich
Division 5 Councillor
Home: 696-2468



Pat Monteith
Division 6 Councillor
Home: 696-6557





*FROM ALL
OF US HERE
AT THE
BRAZEAU
COUNTY
OFFICE....*

*MERRY CHRISTMAS
&
ALL THE BEST IN 2011*

From the CAO Desk

Sadly, rumors abound in every community. Sometimes the rumors develop out of misunderstandings and other times they develop from people that intend to cause harm, either to an organization or to other people within our community. Regardless of the cause, rumors can be harmful. Fortunately, we are a size of community where there is lots of interaction and networking between people within the community and our local government, Brazeau County. Thanks to these networks, we have learned of a number of rumors that need to be addressed and our newsletter is a great opportunity to do that. Here goes:

Rumor: “Brazeau County is accumulating a large amount of debt.”

Fact: Brazeau County’s total debt is \$13,059,666. The maximum amount of debt that the County is entitled to incur is \$35,448,812, pursuant to the Municipal Government Act and Provincial Regulation. In 2010, the County borrowed \$10.5 million over a 4 year term with \$9.1 million borrowed for the new Administration /Public Works facility currently under construction and \$1.375 million borrowed to purchase land in order to secure a long term gravel supply. Annual payment of this debt is planned from a combination of Provincial Municipal Sustainability Initiative (MSI) funding and the sale of the existing Administration/ Public Works facility. This repayment plan is designed so as not to negatively impact property taxes.

Rumor: “The delayed construction of the new County facility will result in massive project overruns”.

Fact: At this point, there are no “massive” project cost overruns. Occupancy of the new facility will be delayed until at least spring of 2011, due to the circumstance of the court ordered receivership of the contractor, Balon Construction. Financially, Brazeau County is well protected through terms of the construction contract and performance bond.

The County will incur some additional costs due to performing extra due diligence including Quality Control and Quality Assurance measures. Although these potential extra costs will be negligible compared to the overall project budget, they are necessary to protect the County and these extra costs may not be recoverable.

Rumor: “The County is not paying attention to expenditure control”.

Fact: The County is in good financial condition; is audited annually and there are good financial controls currently in place. Further, and since May 2010, County Council is now being provided the following:

- Expanded detail of the monthly cash and bank statement reconciliations
 - Monthly actual /to budget revenue and expenditure comparisons.
 - Completed implementation of project costing and cost tracking software
- In 2011, County Council will be provided with monthly balance sheet statements.

Rumor: "The existing County Administration/ Public Works facility contains environmental contamination".

Fact: The existing County Public Works yard has been used for many years as a public works facility. In the past, salt and sand for winter road application was stored on site and there may also be hydrocarbon contamination. We are in the process of conducting an environmental assessment to determine the extent of contamination. Once the environmental assessment is completed, a remediation plan will be developed.

If you hear stories out there, we encourage you to confirm the information by contacting our Reeve, your Divisional Councillor or myself. We wish to serve you and our community well.

Although it does feel early to be extending Christmas greetings, each year time does pass us by so very quickly. I wish everyone a Merry Christmas and please remember to enjoy a safe holiday season with your family.

Sincerely,
Ron McCullough, CAO



**Brazeau County
Administration Office
Holiday Hours 2010**

**December 24th – Closed at noon
Dec. 27th and 28th – Closed**

**Dec. 31st - Closed at noon
Jan 3rd - Closed.**

Never doubt that a small group of thoughtful, committed citizens can change the world. Indeed, it is the only thing that ever has.

-Margaret Mead

Public Notice

Contractor of Brazeau County Administration Building & Shop Facility files for Receivership

BRAZEAU COUNTY, ALBERTA – Brazeau County confirms that they have received notice from BDO Canada Limited (BDO) on October 5th, 2010 that Balon Construction Ltd (Balon) filed an application to the Court of Queen's Bench for Receivership on September 30th, 2010 and the Court has appointed BDO as the Receiver for Balon.

Balon was awarded the tender for construction of the Brazeau County Administration Building and Shop Facility in 2009. At this time, this important construction project continues on budget. However, the originally planned occupancy date of October 31, 2010 will likely shift into early 2011.

Reeve Tweedle and Council are being kept fully apprised of the status of this project. Council encourages any customers and creditors of Balon to please contact the Receiver, BDO Canada Limited. Council and Administration will work diligently to keep Brazeau County ratepayer's fully informed of the progress of this project.

County officials are now working with BDO to ensure that this project is completed on budget as originally planned. Brazeau County Chief Administrative Officer Ron McCullough clarified, "Brazeau County is well positioned to work with BDO to ensure completion of the Administration Building & Shop Facility under the original stipulated price contract terms." McCullough went on to say, "We will ensure that every measure is taken to protect the financial interest of the County and its ratepayers." Establishing a final completion and occupancy date for this project is in the works. Quality assurance of the finished product is also expected.

Reeve Wes Tweedle stated, "We are closely monitoring this situation and will do everything within our power to ensure that we end up with a finished project that meets our expectations."

Customers and creditors of Balon have been given notice by BDO that if they have any questions or concerns to please contact a representative of the Receiver, BDO Canada Limited as follows:

BDO Canada Limited
Attention: Jordan Day
#1700, 10060 Jasper Avenue
Edmonton, AB T5J 3R8
Ph: 780-424-3434

Reeve Wes Tweedle, on behalf of Council concluded, "We encourage any local suppliers of goods and services that may be a creditor of Balon to contact BDO, if you have questions or concerns."

Media enquiries may be directed to:

Ron McCullough
Chief Administrative Officer
Brazeau County
rmccullough@brazeau.ab.ca
Ph: 780-542-7777

Or
Wes Tweedle
Reeve
Brazeau County



A Christmas Story

When four of Santa's elves got sick, the trainee elves did not produce toys as fast as the regular ones, and Santa began to feel the Pre-Christmas pressure.

Then Mrs. Claus told Santa her Mother was coming to visit, which stressed Santa even more.

When he went to harness the reindeer, he found that three of them were about to give birth and two others had jumped the fence and were out, Heaven knows where.

Then when he began to load the sleigh, one of the floorboards cracked, the toy bag fell to the ground and all the toys were scattered.

Frustrated, Santa went in the house for a cup of apple cider and a shot of rum. When he went to the cupboard, he discovered the elves had drunk all the cider and hidden the liquor. In his frustration, he accidentally dropped the cider jug, and it broke into hundreds of little glass pieces all over the kitchen floor. He went to get the broom and found the mice had eaten all the straw off the end of the broom.

Just then the doorbell rang, and irritated Santa marched to the door, yanked it open, and there stood a little angel with a great big Christmas tree. The angel said very cheerfully, 'Merry Christmas, Santa. Isn't this a lovely day? I have a beautiful tree for you. Where would you like me to stick it?'

And so began the tradition of the little angel on top of the Christmas tree.

- Ho Ho Ho.

Council Highlights

November 2, 2010

- Council reappointed the Local Assessment Review Board and Composite Assessment Review Board members who have previously received required training and served on these Boards.

- Council gave second and third (final) reading to Bylaw 736-10, an application for redesignation from Jeff and Robin Wardlow.

- M. Groening, Director of Planning and Development reported that the Lodgepole Fire Smart Project was completed.

- A process will be developed for new businesses starting up in Brazeau County. Each new business will be presented with a gift from their Division Councillor and Director of Economic Development, Kelly Starling.

- Austen Radowitz and Tammy Thirsk made a presentation to Council regarding the FCSS Anti Bullying Campaign. Council passed a resolution and signed a proclamation to proclaim November 14 – 20th Bullying Awareness Week in Brazeau County. The County will support the project by purchasing Anti Bullying Campaign T-shirts for Council and staff. Council also discussed hosting a bullying workshop to Council and staff.

- Third and final reading was given to Bylaw 730-10, a bylaw to designate Wild Caraway as a prohibited noxious weed within Brazeau County, pursuant to the Provincial Weed Control Act.

- CAO Ron McCullough and Rick Ennis, Director of Agriculture Services requested direc-

tion regarding the Terms of Reference for the Agricultural Service Board.

- The County will work with the communities of Lodgepole, Cynthia and Rocky Rapids to assist with installation of ice in the outdoor ice rinks this year. The same concept could be applied for the outdoor rinks in the Hamlets of Buck Creek and Violet Grove, however both of these communities do not have rink boards and those would have to be constructed first. Recreation services will be reviewed as part of the 2011 Budget deliberations.

- Council Procedural Bylaw and Council Code of Ethics Policy will be brought forward to the November 23rd Council meeting for further review and approval.

- The next regular Council meeting is November 23, 2010. Meetings begin at 9:00 am with Ratepayer Concerns heard at 11:00 am.

- The Council 2011 Budget Meetings are scheduled for Friday, November 19, 2010 from 9:00 - 3:00 pm; Monday, November 22, 2010 from 9:00 - 3:00 pm; Wednesday, December 1, 2010 from 9:00 - 3:00 pm and if required Tuesday, December 7, 2010 from 9:00 - 3:00 pm.



Copies of the minutes of each meeting are available on our website at...

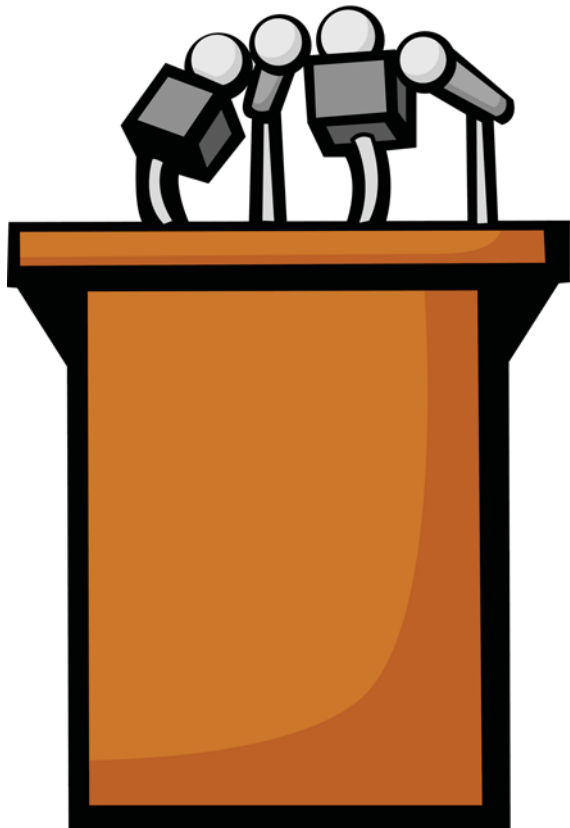
www.brazeau.ab.ca

Upcoming County Council Meetings:

November 23 and December 14.

Meetings begin at 9:00 am.

Ratepayer's concerns are addressed at **11:00** am.



Welcome Home



**Brazeau
County**

2011 Budget Meetings

November 19th, 2010 9:00 am – 3:00 pm

November 22nd, 2010 9:00 am – 3:00 pm

December 1st, 2010 9:00 am – 3:00 pm

December 7th, 2010 9:00 am – 3:00 pm
(If needed.)

Budget meetings are held in Council Chambers and are open to the public.



Who's Who in Brazeau County 2010/2011

REEVE

Wes Tweedle

DEPUTY REEVE

Shirley Mahan

October 26, 2010 – April 26, 2011

COMMITTEES

Agricultural Service Board

Councillor Dawn Konelsky

Member at large Allan Goddard
 Member at large Randy Robb
 Member at large Scott Jeffery
 Member at large Charlie Martin
 Member at large Heather Anderson

Chairman Allan Goddard

Secretary Director of Agriculture

Municipal Planning Commission

Councillor Shirley Mahan
 Councillor Dawn Konelsky
 Councillor Robert Kitching

Member-at-Large Heather Anderson
 Member-at-Large Robert Lind

Secretary Director of
 Planning &
 Development

Subdivision and Development Appeal Board

Councillor Anthony Heinrich
 Councillor Kara Westerlund

Member-at-Large Dave McKeeman
 Member-at-Large Anni Nichol
 Member-at-Large Marie Cornelson

Alternate Member-at Large Betty Frey

Alternate Member-at-Large Allan Goddard
 Secretary CountyManager

AGENCIES

Brazeau Seniors Foundation

Representative Pat Monteith
 Alternate Wes Tweedle

Member-at-Large Marie Cornelson

Breton and District Library Board

Representative Pat Monteith
 Alternate Wes Tweedle

Drayton Valley and District Library Board

Representative Dawn Konelsky
 Alternate Kara Westerlund

Pest and Weed Appeals Committee

Member-at-large Gordon Smith

Warburg Seed Cleaning Plant

Representative Anthony Heinrich
 Alternate Pat Monteith

AD HOC COMMITTEES

Community Foundation Nominating Committee

Reeve Wes Tweedle

Eagle Point Provincial Park and Blue Rapids Provincial Recreation Area Council

Councillor Shirley Mahan
 Alternate Kara Westerlund

Family and Community Support Services

Councillor Shirley Mahan

Family/School Liaison Advisory Board

Councillor Kara Westerlund
 Alternate Anthony Heinrich

**Grande Alberta Economic Region
Committee Governing Board**

Reeve Wes Tweedle
Alternate Shirley Mahan

Municipal Library Board

Councillor Dawn Konelsky
Councillor Shirley Mahan

Member at large – Allan Goddard
term expires 2012

Member at large – Donna Gawalko
term expires 2011

Member at large – Sylvia Flesher
term expires 2013

North Saskatchewan Watershed Alliance

Councillor Robert Kitching

West Central Airshed Society

Councillor Wes Tweedle

Weyerhaeuser Forest Advisory Committee

Representative Kara Westerlund

Yellowhead Regional Library Board

Councillor Dawn Konelsky
Alternate Shirley Mahan

BioMile/BioArc Committee

Councillor Robert Kitching

Drayton Valley Chamber of Commerce

Councillor Dawn Konelsky

Pembina Sentinel Air Monitoring

Councillor Anthony Heinrich

Pembina Area Synergy Group

Councillor Anthony Heinrich

FIRE GUARDIANS

Area One Don Fischer
Area Two Randy Robb
Area Three Lynn and Mark Raines

Christmas Classic with a Twist



The Cranberry Nanaimo Bar

BASE

½ cup butter, softened
3 squares semi-sweet chocolate
2 tablespoons granulated sugar
1 egg
2 cups graham crumbs
1 cup Angel Flake Coconut
½ cup chopped hazelnuts
1 tablespoon orange rind

CRANBERRY LAYER

¼ cup whole cranberry sauce, finely chopped
1 tablespoon orange liqueur or orange juice

CUSTARD LAYER

2 tablespoons custard powder
3 tablespoons milk
¼ cup butter, softened
2 cups icing sugar

CHOCOLATE LAYER

4 squares semi-sweet chocolate, chopped
1 tablespoon butter

Base: Melt butter with chocolate and remove from heat. Stir in sugar and egg. Add crumbs, coconut, orange rind and nuts; mix well. Press into 9" square pan. Chill

Cranberry Layer: Combine cranberry sauce and liqueur. Spread evenly over base. Custard Layer: Combine all ingredients and beat until smooth. Spread over base. Chill.

Chocolate Layer: Melt chocolate and butter over low heat or in microwave on med. power for 2 minutes, stir until melted. Spread evenly over filling. Chill. Let stand at room temperature for fifteen minutes before cutting into bars.

Economic Development

Family Business Succession Planning Workshop



Are you a family business? Are you getting ready to pass the business down to the next generation? Then this workshop is for you.

Consider the facts. Family-owned business:

- generates approximately 60% of Canada's Gross Domestic Product
- employs 6 million workers in Canada (both full-time and part-time)
- Creates 70% of all new jobs in North America
- Provides 55% of all charitable donations

Staggering, isn't it? Yet, 70% of family-owned businesses fail before they are passed on to the second generation. That figure jumps to 88% for third-generation succession and 97% for fourth. (source: Family Business Institute)

With proper planning the success rate for family businesses can be greatly improved.
The Business Family Succession Planning

Workshop is put on by the University of Alberta, Alberta School of Business. The session will be geared to business owners from all disciplines who seek to deepen their understanding of the process of succession planning.

The session will be held on
February 17, 2010
8:00 am – 4:30 pm

At the Lakeview Inn and Suites.

A light breakfast breaks and lunch will be provided.

Cost: \$25.00 per participant

To register please contact Angie Spence at
780-542-7777 Space is limited.

For more information on the workshop visit the Economic Development Department portion of Brazeau County's website at www.brazeau.ab.ca

Gift Baskets are back!!

Homemade goodness that brings a smile every time...

You can choose from 7 unique bundle combinations with pricing starting as low as \$15. Each gift is beautifully wrapped - ready for instant giving...

Big Bundle \$50

Tote Bag
6 Jars - 3 Pickles, 2 Relish and
an Apple Butter

Mixed Bundle \$32

Tote Bag
4 Jars - 1 Pickle, 1 Relish & 2 Jam/Jelly

Mini Jelly Tower \$25

3 - 125ml jars of uniquely flavoured
Apple Jelly in a wooden gift box

Sweet Bundle \$22

Tote Bag
3 Jars of Jellies and Jams

Pickle - Relish Duo \$20

Tote Bag
Pickled Carrots or Beets plus
A tasty Relish

Apple - licious \$15

Crab-Apple Jelly
Apple Butter

Jam - tastic \$15

2 Jars of Jam or Jelly

**Orders will be taken until
Nov 30, 2010 and/or
while supplies last.**

Locally Grown & Locally Processed

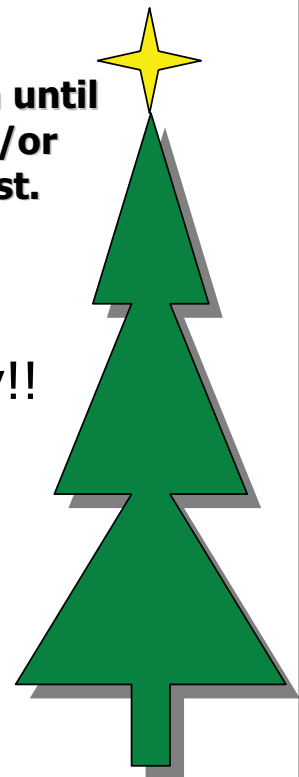
Don't delay – get your order in today!!

To Order contact us by phone or email:

Margarita 780 542 0346
mpischke@brazeau.ab.ca

Mary 780 898 3185
mgowans@brazeau.ab.ca

www.brazeaukitchenparty.com





*Brazeau Regional Tourism
Presents...*

*Free Workshop for Tourism
Businesses*

Marketing Communications for the business community is a training session that will be held on Tuesday, December 7, 2010. Travel Alberta will be facilitating this event. It is an introduction to the context and role of marketing communication and will assist you in understanding the fundamentals and various elements of the promotional mix and how they complement and enhance each other. This workshop will be held at the Super 8 Hotel Conference Room.

Please RSVP to Brazeau Tourism if you will be attending at 780.542.7529.

Registration 9:30am,

Course time: 10am to 3pm

We will also be having a workshop on **Online Marketing** the process of promoting your tourism business or event on the internet. This workshop begins with the introduction to online marketing at its basic level to help you understand the benefits of using this type of marketing medium. The advantages of online marketing are that it does not require a large budget to create an effective campaign. This workshop will also be held at the Super 8 Hotel Conference Room in January 2011.

Please contact Brazeau Tourism at 780.542.7529 if you are interested in this workshop.

Registration 9:30am,

Course Time: 10am to 3pm



100km Kitchen Party Honored

In September the 100K Kitchen Party received Special Recognition from the Grande Alberta Economic Region (GAER)

In the Photo: Glenn Taylor Chairman of GAER, Margarita Pischke and Kelly Starling – 100K Kitchen Party and Wes Tweedle Reeve Brazeau County. Missing Mary Gowans- 100K Kitchen Party.



→ A conference for farmers and future farmers.

TOPICS:

- Greenhouse Growing
- Farm Gate Meat sales
- Alternative crop production
- Regulations around selling off the farm

And much, much more...

\$30 PER PERSON
 (Includes breakfast & lunch)

February 15, 2011
 MacKenzie Conference Center
 Drayton Valley, Alberta

100^{km} KITCHEN PARTY

Education Centre Spring 2011

We are pleased to kickoff our 2011 Education Program with the following group of courses. Stay tuned – more courses to come.

TRADITIONAL COOKING:

We have a large choice of canning courses to choose from with a mixture of very talented hosts. You will get the opportunity to visit one of our local farms to purchase the main ingredient.

Then head down to the Easyford Community Centre for the fun! We will provide a list of all the local producers that carry the ingredient that you need, the common ingredients, jars, the talented instructor and the fun!!

Apple Butter	March 15, 2011	\$60
Crabapple Jelly	March 30, 2011	\$60
Pressure Canning	March 02, 2011	\$60



INTERNATIONAL COOKING:

Again we encourage you to shop local when heading out to purchase the main ingredient for these courses. We have a fantastic team of enthusiastic hosts that are passionate about sharing their culture with you. You will take home 2-3 meals.

Lebanese Meat Pies January 27, 2011 \$60



GARDENING COURSES:

Soil	6-9pm	Feb. 22, 2011	\$20
Starting Seeds	6-9pm	March 10, 2011	\$20
Pests	6-9pm	March 24, 2011	\$20
Composting	6-9pm	April 7, 2011	\$20

www.brazeaukitchenparty.ca



Driving during the winter comes with an added degree of responsibility. Whether you are driving alone or with your family, it is important that you take the necessary steps to ensure that your car is safe during the winter. When temperatures get low, there are a variety of conditions that you will need to be aware of including poor visibility from snow, icy roads and engine failure.

One of the single most important steps that you can take to ensure that you are ready for being on the road during a Canadian winter is to make a Winter Safety Checklist. Your Winter Safety Checklist should have everything that you should do in terms of maintenance as well as everything that you will need to stock in your car.

**“an inexpensive sleeping bag...
might save your life.”**

A cell-phone is of course remarkably important in case you have mechanical trouble while on the road. However, if you are traveling frequently in areas that are without cell phone service, you should consider investing in a good CB radio. Being able to call for help should be your number one priority while on the road.

Don't let yourself accidentally run out of fuel. Especially during winter months it is imperative to always leave your tank at least half full.

All-weather tires or snow tires and chains are of course quite important and another must have to be put on your Winter Safety Checklist. These items might not be very important if you are living in Miami, but in Alberta winters, they are nothing short of essential.

Consider buying an inexpensive sleeping bag and keeping it in your car. This simple trick might save your life.

Having a little extra food and water on hand is of course a very good idea. Many people don't think about dehydration in the winter but depending upon your circumstances, it could easily be an issue.

When you are on the road, always make sure that you have control. If you feel the driving conditions are poor, don't push yourself. Make sure that you pull over until you feel more confident about driving. Also remember to steadily apply your brakes, and always go at a reasonable pace. Most drivers who are used to winter conditions already know to avoid slamming on the brakes.

Hay Storage Knowledge Nuggets



Large losses in quality and quantity result when forages are exposed to the weather. The amount of loss will vary depending on precipitation, storage site location and preparation, and the original condition of the bale. Losses are more significant in higher rainfall conditions than under drier environments.

Selecting the most appropriate type of storage depends on the end-use for the forage, the specific livestock feeding situation and the needs of the producer.

Not all classes of livestock have the same forage quality requirements. Consider covering high quality forages that is to be fed to high performance livestock or are destined for the

export or domestic market.

Storage losses can be reduced by two-thirds with indoor storage and by one-half with good covering outside. Main areas of concern are weathering on the tops and sides of the bales but also where the bales contact the ground. Moisture will move from the ground up into the bale through a “wicking” action.

All storage sites regardless of the type of storage, should be well drained. A firm base of course rock - preferably not gravel or concrete, should be used to minimize moisture movement from the ground up into the bales. Avoid areas where moisture and/or snow can accumulate or where drying is impaired.

Resistance to weathering depends on how

well the packages are made. Larger bale packages have more volume per unit of surface area exposed to the elements. A 2" layer of weathered material on a 4 X 4 bale represents 16% of the bale volume while the same 2" layer on a 6 X 5 bale represents 11% of the volume. Caution: As bale size and density increases, proper baling moisture is more critical to prevent heating and deterioration in quality.

High-density bales will tend to "sag" less, exposing less surface area to the ground and a dense surface on the bale helps shed rain.

Storing bales outside on the ground without covers is the cheapest method of storage but has the greatest potential for weathering losses, especially under extended storage periods.

Large round bales without cover should be stored end-to-end in single rows in a north-south orientation with space between the bales to facilitate good air circulation and drying.

Uncovered pyramid stacking exposes lower levels of bales to increased weathering as rain shed off the top bales filters into the lower levels. Two-bale "mushroom" stacking where the bottom bale is placed on end and the top bale on it's side minimizes the amount of ground contact but moisture shed off the top bale can accumulate in the lower bale significantly increasing spoilage.

Temporary storage options can be effective and include low-cost frame structures with fabric covers, reusable tarps or bale sleeves.

Wrapping individual bales with light-stabilized plastic significantly reduces dry matter losses. However, the plastic can restrict air movement at the bale surface and may retain considerable moisture at the bottom of the bale. "Net-wrap" is similar to plastic wrap but utilizes a porous material designed to shed water and permit

air movement at the bale surface. The use of self-adhesive materials eliminates the need for twine.

Permanent covered storage should be considered in a long-term forage production system. Weather-tight facilities will maintain forage quality the best of all storage options. To be effective they must be structurally sound, well designed to allow easy access by bale handling equipment and be properly sized for the intended crop.

Information from Foragebeef.ca

"I know of no pursuit in which more real and important services can be rendered to any country than by improving its agriculture."

- George Washington

Ergot a Serious Problem in Feed

From the Nov 1, 2010 Issue of Agri-News

Ergot is being found in feed grain at much higher levels than usual. The ergot problem, precipitated by the spring weather conditions, is very widespread across most of Alberta and in other Prairie Provinces as well.

“Weather conditions this year when plants were heading and flowering was very cool with high humidity and it took more time than usual for the plants to pollinate,” says Barry Yaremcio, beef and forage specialist with Alberta Agriculture and Rural Development.

“Airborne ergot spores from previous crops infected the developing heads. This year, there’s a problem with not only rye, but triticale, wheat, barley oats and even some of the grasses; producers are finding that ergots are presents at much higher levels than usually seen in all of these crop types.”

“...if there is any ergot at all in the screenings, there will be problems in the herd.”

Ergot causes three serious problems when fed to an animal. For females in the breeding herd, any ergot in grain or hay will cause an abortion. This applies to not just cows, but horses, pigs

and chickens as well; all of these animals will be affected if given feed that contains ergot. Tolerance for ergot in pregnant or breeding animal rations is zero.

Feeder and growing animals are not immune to the effects of ergot. Animal performance is impaired. It is often seen as poor daily gains and lower growth rates. It will take six to eight weeks for the slower

growth rates to become apparent. The greatest concern, after the threat to reproduction,

is that ergot reduces the blood flow to the extremities, such as the tail, ears and hooves or claws. If ergot levels are high enough, the animals will start to slough off their hooves, ears and tails. The reduced blood flow also makes the animals more susceptible to frostbite in colder weather. It is unlikely that animals affected to this extent will ever recover.

“The Ag-Info Centre has been receiving a lot of calls about buying screenings as a feed source,” says Yaremcio. “While screenings reduce costs of feeding over the winter, the cautionary factor here is that if there is any ergot at all in the screenings, there will be problems in the herd.”

“The ergot limit for pigs is zero. For all other species, the maximum limit is one kernel per



1000 or 0.1% by weight. In cattle, you can allow a maximum of 12 gm of ergot consumption per day; that's a quarter of an ounce. It's easy to see that it doesn't take much ergot to start causing problems. It may take six to eight weeks, but problems will start showing up."

Some feed mills are not accepting ergot levels above 0.04 to 0.06 per cent in purchased grains. This is to reduce risk to those purchasing complete feeds and pelleted rations.

When it comes to swath grazing, there is no easy way to measure for ergot. On a case-by-case, field-by-field basis, producers will have to evaluate their swaths, pulling them apart, calculating how much ergot is present and making a judgement call.

"If a swath looks like it may contain borderline toxic levels of ergot, dilute out the ergot level by feeding forage that does not have ergot. When in doubt dilute, as it is better to be on the safe side," says Yaremccio. "This means diluting the feed with other feeds that are ergot-free, and not giving the livestock full feed on the swath grazing material."

Contact: Barry Yaremccio
barry.yaremccio@gov.ab.ca
310-FARM (3276)

Information from Alberta Government -
Agriculture and Rural Development

Brazeau County Equipment Rentals

Cattle Scales	\$30/day	*\$50 D/D
Cattle Squeeze	\$30/day	*\$50 D/D
Calf Tipping Table	\$30/day	*\$50 D/D
Loading Chute	\$30/day	*\$50 D/D
Corral Panels	\$30/day	*\$50 D/D
Electronic Bale Scale	\$30/day	\$100 D/D
Brillion Seeder	\$80/day	\$100 D/D
Soil Sampler	No Charge	\$30 D/D
Hand Grass Seeder	No Charge	\$30 D/D
Feed Probe	No Charge	\$30 D/D
Bran Bait Applicator	\$15/day	\$100 D/D
Skunk Trap	\$10/day	\$50 D/D
Cattle Drive Signs	No Charge for 3 days	
	\$25 after day 3	\$100 D/D
Ag Haul Route Signs	No Charge	\$110 D/D
Backpack 4 gallon	\$5/day	\$50 D/D
Slip-in 65 gallon	\$35/day	\$100 D/D
Sprayer		
300 gallon	\$35/day	\$100 D/D
Pull-Type Sprayer (boomless)		

**Contact the Brazeau County office at
780-542-7777 for additional information,
or to reserve and rent.**

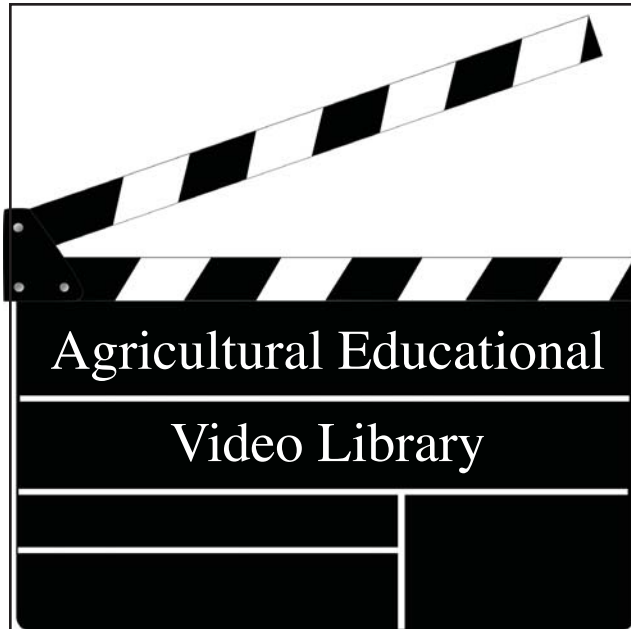
Please Note: Brazeau County has two Gallagher HR 3 Tag readers for County producers to use for age verification of livestock. If you are a cattle producer in Brazeau County, you are welcome to rent a Gallagher reader from our office for \$25/day with a \$250 D/D. Call the County office at 780-542-7777 to reserve yours today.



Agriculture Service Board Meeting Dates

Next Meeting is December 15th
All meetings are held in the
Brazeau County Council Chambers
Meetings begin at 9am

Everyone is welcome to attend the
Agriculture Service Board meetings.



The Brazeau County Agricultural Department has a sizeable video collection that contains topics ranging from agricultural marketing to the diagnosis of soil and crop problems.

The following list has videos that relate to issues or matters in Brazeau County:

- Advancing Agriculture Through Technology**
 - Cattle Marketing
- Farm Diversification**
 - Forage and Grain Feed Testing
- The Effect of Livestock and Water Quality**
 - Managing Our Rangelands
- Pasture Management**
 - Making the Most of Moisture
- Woodlot Management**
 - The Business of Agriculture
- Water Wells That Last**

For more information regarding these videos, or to obtain them for viewing, please contact the Brazeau County Agricultural Department.

Animal Control Officer



780-542-3265



Livestock Identification Services

Brand Inspector Area Supervisor:

Alton Wood
w: 542-3081 • c: 898-2085 24hrs.

Additional Staff:
Wildwood Area
Lorne Day 898-2284
Office:
Margo Tucker 542-3081

Keep your eyes open for Poachers

With hunting season in full swing, Fish and Wildlife officers are asking the public for assistance with poaching investigations. Poachers steal from future generations and give legitimate hunters a bad name. You can assist in the protection of fish and wildlife resources through the Report a Poacher (RAP) program. Without the support of the public in reporting illegal acts such as shot and left wildlife, night hunting, and over harvest; many of these infractions would go undetected. The Report a Poacher line is available 24-hours a day and is toll-free across North America.

Through the RAP program, members of the public can report any illegal hunting and fishing activities. You may be eligible for a monetary reward if the information you provide leads to charges. Callers can choose to remain anonymous and still qualify for the reward. Any personal information obtained is kept strictly confidential.

Any information you can provide Report a Poacher about a suspected violation is valuable. If possible, collect the following details:

- Date, time and location of the event
- Licence plate number of the vehicle involved
- Any distinguishing details about the vehicle such as:
 - Make
 - Model
 - Colour
 - Dents
 - Stickers
 - Any additional details
- Description of the people involved
- Details about the violation

The Report a Poacher line can also be used to provide after-hours service in emergencies involving wildlife, such as a bear mauling.



Public Works & Infrastructure

Brazeau County Snow Plow Program

The Brazeau County Public Works Department is responsible for the removal of snow on all municipal roads. In addition to this compulsory service, a user-pay program to remove snow from private driveways has been in place for several years. This program excludes hamlets.

Residents must sign an application form available at the Brazeau County office. An existing agreement may be updated by phone. No private property will be entered without a signed agreement.

The first clearing will be provided at no charge. All subsequent clearings will be at \$60.00 /hour, or portion thereof, with a minimum charge of \$20.00.

Driveway snow clearing does not involve custom snow clearing of yards. It involves a pass in and out on the driveway. If custom clearing is required, the resident should make arrangements with private contractors.

The sign issued when an application is completed must be placed at the end of your driveway, numbers facing the road only when you require snow removal. At all other times, the sign should be turned so numbers are not visible or it should be removed. This will avoid unnecessary snow removal for which you will be charged.

Exemptions: Exemptions over and above the standard one plowing at no cost is being offered to households where an able-bodied individual



(usually male) does not reside on the premises. More specifically, this could apply to seniors (who live alone on the property), disabled or handicapped individuals, and widows who cannot carry out the work themselves. Individuals must sign the declaration stating their eligibility.

Emergency Access: Individuals who require emergency access must make their own provisions. Main roads are of a higher priority than private driveways and are a mandatory responsibility of this municipality. Private driveway

maintenance will be of no value if major roadways are not passable for emergency vehicles.

Private Contractors: There are private contractors who can be contacted regarding driveway maintenance. If you require immediate snow clearing of driveways, please contact one of these businesses.

If you have concerns or work requests related to snow removal, the private driveway maintenance policy, or wish to discuss this subject in greater detail, please contact the Public Works Department at 780-542-7711.

REMEMBER
WINTER CONDITIONS REQUIRE SAFE WINTER DRIVING PRACTICES.

PLEASE DRIVE SAFELY AND IN ACCORDANCE WITH ROAD CONDITIONS

Scrap Metal Recycling

Brazeau County residents can recycle SCRAP METAL to the Violet Grove, Rocky Rapids and Buck Creek Transfer Stations year round.



Accepted Items

- Pressurized containers
- (punctured or with valves removed)
- Steel
- Cast Iron
- Stainless Steel
- Aluminum
- Brass
- Copper
- Lead
- Metal Alloys
- Electrical Wire



Unaccepted Items

- Sealed or pressurized containers
- Radioactive material
- Asbestos or products containing such biohazard material
- Chemicals or product containers containing flammable liquids, oily material, chlorine, caustic soda or other controlled substances.
- Ammunition or ordinance
- PCB containing material
- Batteries
- Scrap containing excess amounts of debris (dirt, concrete, tar ect.)

ALL SCRAP METAL MUST BE UNLOADED BY HAND

Other items deemed unacceptable that are not on the list are at the discretion of the Transfer Station Attendant.

Brazeau County residents can now recycle Household Appliances at: Rocky Rapids, Violet Grove and Breton Transfer Stations.



Acceptable Items: Washers, Dryers, Stoves, Fridges, Freezers, Dishwashers, Light Tin

Unacceptable Items: Microwaves, Televisions, Electronics

ALL APPLIANCES MUST BE UNLOADED BY HAND



Brazeau County Waste Transfer Station Hours of Operation

780 543 7777
www.brazeau.ab.ca

Transfer Station	Monday	Tuesday	Wednesday	Thursday	Friday	Saturday	Sunday
Violet Grove	Closed	9am - 7pm	Closed	9am - 7pm	Closed	9am - 5pm	Closed
Easyford	1pm - 6pm	Closed	9am - 6pm	Closed	Closed	9am - 5pm	Closed
Lindale	Closed	Closed	9am - 6pm	Closed	Closed	9am - 5pm	Closed
Buck Creek	Closed	2pm - 7pm	Closed	9am - 6pm	Closed	9am - 5pm	Closed
Rocky Rapids	Closed	4pm - 8pm	Closed	8am - 6pm	Closed	9am - 5pm	Closed
Cynthia	Closed	Closed	11am - 6pm	Closed	Closed	9am - 5pm	Closed
Breton	Closed	9am - 2pm	Closed	9am - 6pm	Closed	9am - 5pm	Closed
Lodgepole	Closed	11am - 8pm	Closed	Closed	Closed	9am - 5pm	Closed

Please bring your **household** garbage to the site nearest to you during the scheduled hours of operation. To leave waste outside the locked gates of a transfer station is illegal and violators will be prosecuted. Waste transfer stations do not accept tires, liquid, concrete, demolition, scrap metal, appliances, animal carcasses or hazardous waste. Brazeau County now has recycling bins at all eight of our transfer sites. Recycling facilities are accessible during the sites regular hours of operation. Recycle all that you can using blue or clear bags available at your local hardware or grocery store. Additionally, recycling can be dropped off at either the Landfill Location in Drayton Valley or at the Recycling Depot on Industrial Road.

New Waste Transfer Cards

Brazeau County's Public Works & Infrastructure Department has mailed every landowner a Waste Transfer Station Card. If you have not received your card in the mail, please contact our office at 780-542-7711.

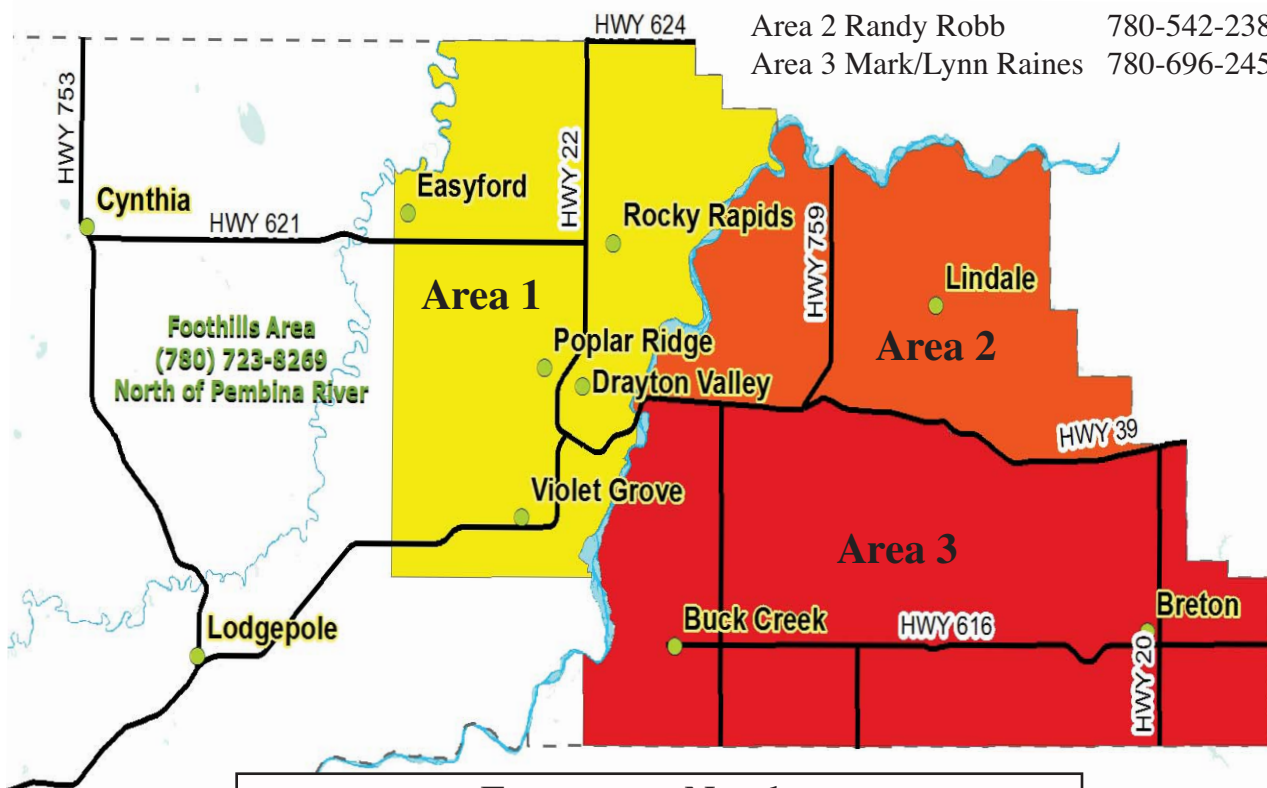
PLEASE NOTE: Any member of your household can use the card. If you require additional cards for renters or additional separate residents, please contact Brazeau County to make application. You, the landowner are ultimately responsible for the return of the additional cards should your renter move. Please contact our office for more information. Transfer Stations users will be given lenience until November 15, 2010, after such time, Transfer Station attendants will require ALL users to produce their Waste Transfer Cards prior to dumping at any of the Brazeau County Transfer Stations.

**Public Works & Infrastructure after hours
EMERGENCY number 780-542-8770**

Fire Guardian Map

Fire Guardian Numbers

Area 1 Don Fischer	780-542-4330
Area 2 Randy Robb	780-542-2383
Area 3 Mark/Lynn Raines	780-696-2454



Emergency Numbers	
Breton	Forest Fires 310-3473
Drayton Valley	Brazeau Forest Area 542-6616
Lodgepole	(Drayton Valley Office)

911

By obtaining a fire permit, you have simply indicated your wish to burn. You are not absolved of any responsibility for conducting a safe burn. Contravention of the Forest and Prairie Protection Act by refusing or neglecting to comply with the regulations, or a permit condition, may result in prosecution. You may be liable to a fine of up to \$10,000 and in addition, you could be liable for all resulting damage and suppression costs.

All burning; including stubble, brush, grass and debris must be conducted with an approved burning permit.

If you use a barrel for burning garbage, or if you are clearing land and burning piles or windrows, please follow the minimum safety and equipment requirements.

Call your Fire Guardian for information and permits.

FIRE PERMITS ARE REQUIRED YEAR ROUND!

www.brazeau.ab.ca

Planning & Development

Lodgepole FireSmart Update

Brazeau County was able to secure an additional \$24,360 in grant money to put towards the Lodgepole FireSmart Project. There is a pond north of the Hamlet which can be used as a water source if needed by fire crews. In order to protect the water source and allow fire workers access to the pond when needed, additional work was done around the pond in October. Thank you to the Lodgepole residents for their patience and cooperation.

Who's New?

We would like to welcome Jocelyn Beattie as Planning Assistant. Jocelyn came from the small Hamlet of Tomahawk, where she was raised. She recently moved to Drayton Valley and joined the Brazeau family in June of 2010 working as the receptionist. In October of 2010 she accepted a position in Planning and Development. She is very excited to be taking on this new opportunity and learning experience.

We would also like to welcome Brittany Miller to the team as a Planning Assistant. Brittany has been in Drayton Valley for 6 weeks officially but has been commuting back and forth from Edmonton since January 2010. She worked in Edmonton for 4 years at Pioneer Land Services Ltd. as a Land Administrator. She really enjoyed the job but not the city life so the smaller town atmosphere of Drayton Valley is working for her. Brittany moved here officially after becoming engaged in August and was happy to have been hired on in Planning and Development doing related work in her field. Brittany is excited to learn and become a natural at her job.

Planning and Development Contacts:

Melissa Groening
Director of Planning and Development
Mgroening@brazeau.ab.ca

Jocelyn Beattie
Planning Assistant
jbeattie@brazeau.ab.ca

Brittany Miller
Planning Assistant
Bmiller@brazeau.ab.ca

Angie Spence
Administrative Assistant
Aspence@brazeau.ab.ca

If you require assistance, or have any questions regarding Planning & Development, please call us at 780-542-2667



Municipal Planning Commission (MPC)

Meeting Dates:
Nov 9th, 30th and Dec 21st, 2010

Meetings are held in the Council Chambers
at Brazeau County's Administration Building
and start at 9:00 am.

All meetings dates are subject to change.
Please call 780-542-2667
to confirm dates



What's your sign?

Brazeau County residents need to know their Civic Address (the numbers on their blue driveway/gate sign). During an emergency, contact with 911 dispatchers, emergency personnel and location information is referenced by Civic Addresses. This address is key for emergency personnel to respond accurately and quickly to an emergency in rural settings.

Read it. Learn it. Teach it. Remember it.

49300 RGE RD 43

Keeping Fire Safe this Holiday Season

With the holiday season fast approaching it is important to think safety. Here are a few tips to keep you and yours safe this holiday season.

The Christmas Tree

When purchasing an artificial tree, look for the label "Fire Resistant." When selecting a live tree, check for freshness. The needles should be green and hard to pull from branches. Turn off the tree lights when you go to bed or leave the house to prevent the lights from "shorting" out and starting a fire. When setting up a tree at home or at work, place it away from fireplaces, radiators or portable heaters and be sure not to block doorways.

Fire Prevention Tips

Place candles in non-tip candle holders and ensure they are away from curtains, the Christmas tree and out of reach of children and pets. Never leave lit fireplaces, stoves, or candles unattended. Install a smoke detector and carbon monoxide detector in your home and test them monthly; replace the batteries twice a year (when you change your clocks in the spring and fall).



Community Associations

Berrymoor Centre
Call Delene VanEmber 780-542-6179

Buck Creek Community Association
Call Vickie Steffenson 780-542-2459

Carnwood Country Hall Society
Call Sharon Breitzkreuz 780-542-2378

Cynthia Recreation Association
Call Laurel Gammel 780-894-3983

Easyford Community Centre Society
Call Tanya Hines 780-542-6906
www.easyford.ca

Funnel Community Hall Association
Call Barb Meinczinger 780-696-2491

Lindale Community Hall Association
Call Wes Tweedle 780-542-3324

Lodgepole Recreation Society
Call Donna Wiltse 780-894-2260

The Lodgepole Curling Club
Call Lawrence Warman 780-894-3592

New Moose Hill Community Club
Call Christie Movald 780-696-3860

Rocky Rapids Community League
Call Jean Woloszyn 780-542-3083

Violet Grove Community Club
Call Paula Mahan at 780-542-7864

Whitby Community League
Call Shawna McGinn 780-339-2504

**Drayton Valley & District FCSS in
partnership with the Ministerial
Association are offering:**

**Annual Christmas Candlelight Memorial Service
Thursday, December 9, 2010 at the Baptist
Church
7:00pm – 8:00pm**



It's for those that are having a hard time and can't face the holidays. They have experienced the death of a loved one and the Christmas season brings back many memories of good times that are gone forever. Everywhere you go there are reminders, Christmas music, brightly wrapped packages, and you feel so alone.

If you are unable to be with family during this holiday season or missing a loved one who has passed, join us for a Non-Denominational Remembrance Service.

Everyone is welcome to attend. Snacks and refreshments are provided.

This year we are having a "Memorial Table" for photos to be placed of loved ones. Please feel free to bring a photo in a frame of any size for a candlelight memorial service.

Please call Barb at Drayton Valley & District Family Community Support Services at 780.514-2206 for more information.

Library Hours

Rotary Branch

(5749 – 45 Ave. Drayton Valley)

780 – 514 – 2528

Monday – Friday: 12 noon – 6 pm

Saturday: CLOSED

Sunday: CLOSED

Drayton Valley Library

780 – 514 – 2228

Monday – Thursday: 10 am – 8 pm

Friday: 10 am – 5 pm

Saturday: Noon – 4 pm

Sunday: CLOSED

Breton Library

780 – 696 – 3740

Monday – Thursday: 10 am – 5 pm

Friday: 10 am – 8 pm

Saturday: 9 am – 2 pm

Sunday: CLOSED

STORY TIME: Thursdays from

11 – 11:30 am



Brazeau County supports two Family and Community Support Services (FCSS)

Programs for area residents.

Drayton Valley & District FCSS

Coordinator: Lola McGee

780-514-2200

fcss@draytonvalley.ca

Breton & District FCSS

Director: Deanne Young

780-696-3636

bfcss@telus.net



Youth Holiday Activities



Swimming & Party

Dec 29th
Free Pizza

Dec 30th Youth activities planned

- ◆ Watch the newspaper for more exciting details

- ◆ Meet the new: **“Youth Mentor Connector”**

Call Brooklyn at 780.898.6037 or email mentor@incentre.net



Drayton Valley & District
Family and Community Support Services

Contact Names and Numbers

BRAZEAU COUNTY EMERGENCY ON CALL 780-542-8770

Brazeau County Office	780-542-7777	Public Works	780-542-7711
Fax Line	780-542-7770	Road Ban Information	780-542-9388
Shop (Maintenance)	780-542-7778	Constable Ed Hees	780-202-0722
Agriculture	780-542-7779	Constable Steve Goodman	780-202-2271
Planning & Development	780-542-2667		

Brazeau Fire Services

Drayton Valley Fire Alarms	911
Breton Fire Alarms	
Lodgepole Fire Alarms	
Forest Fires	

Other Emergency Numbers

Ambulance	911 or 780-542-5211
Police	911 or 780-542-4456
Drayton Valley Hospital	780-542-5321
Alberta Hwy's	1-888-255-5554
Crime Stoppers	1-800-922-8477
Distress Line	1-800-232-7288
Poison Centre	1-800-332-1414
Sustainable Resources	780-542-6616

SCHOOL CONTACT NUMBERS

Breton Elementary School	780-696-3555
Breton High School	780-696-3633
Aurora Elementary School	780-542-9355
Drayton Christian School	780-542-7066
Eldorado Elementary School	780-542-5544
Evergreen Elementary School	780-542-5535
Frank Maddock High School	780-542-4401
F. Maddock Outreach School	780-542-1551
H.W. Pickup Jr. High School	780-542-4495
St. Anthony School	780-542-4396
Holy Trinity Academy	780-621-5735
Wildrose School Division	1-800-771-0537
St. Thomas Catholic School	780-986-2500
Pembina Ed. Consortium	780-542-5400
Powerhouse Learning	780-542-3373

Other Numbers

Parent to Parent	780-621-2849
FCSS Drayton Valley	780-514-2204
FCSS Breton	780-696-3636
Town of Drayton Valley	780-514-2200
Village of Breton	780-696-3636
Breton Library	780-696-3740
Drayton Valley Municipal Library	780-514-2228
Omniplex	780-514-2234
Park Valley Pool	780-514-2225
Brazeau Senior's Foundation	780-542-2712
55+ Recreation Centre	780-542-4737
Senior's Wellness Program	780-542-4737
Meals on Wheels	780-542-3216
Drayton Area Food Bank	780-514-3777
Beehive Support Services	780-542-3113
David Thompson Regional Health	780-542-4415
Brazeau Regional Tourism	780-542-7529

