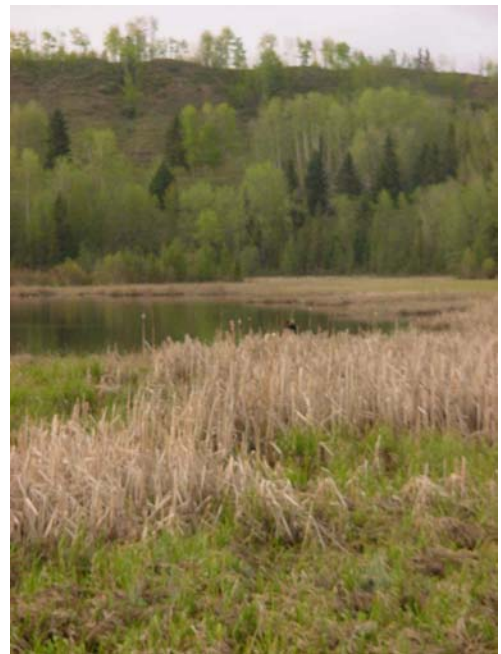


Conservation

Brazeau County Agricultural Services works towards ultimate land stewardship and environmental benefits, promoting Alberta's Environmental Farm Plan and offering demonstration and workshops in these areas.



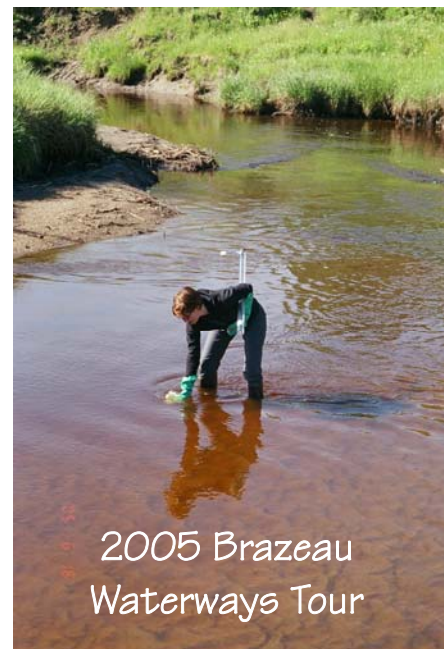
1. Brazeau Healthy Waterways

Mission Statement

"Provide leadership in promoting healthy waterways in the Brazeau County watershed community through education and co-operation"

Goals

- 1. Create a positive image of agriculture to the general public.*
- 2. Provide incentive to encourage or try alternative watering systems.*
- 3. Provide information and direction in managing overland flow.*



2. West Central Conservation Group

The West Central Conservation Group (WCCG) is a partnership between the municipalities of Barrhead, Brazeau, Lac Ste. Anne, Woodlands, Yellowhead, and the West Central Forage Association. Our group has formed in partnership to better provide an agricultural conservation program to local producers. We are mandated by the AESA (Alberta Environmental Sustainable Agriculture) program to assist producers in the adoption of environmentally sound agricultural practices and have an adoption rate of these practices of 5% in 3 years. Some of these practices are:

Good Pasture Management

- Swath Grazing
- Rotational Grazing
- Using Riparian Pasture Units

Nutrient Management

- Soil Testing
- Efficiency software use, like Cowbytes

Integrated Crop Management

- Minimal Disturbance Tillage
- Woodlot management
- Responsible Pest Management (ie. Biocontrol)

Native Rangeland Health

- Riparian Pasture Units
- Limiting direct access to water bodies
- Preserving Biodiversity

The WCCG uses workshops, demonstration sites, newsletters, pasture schools, and especially one-on-one farm calls to provide information to producers. Some services we supply, but are not limited to include, grant application assistance, pasture rotation planning, forage production analysis, soil sampling, and range & riparian health assessments. Our involvement with producers is voluntary and confidential. By partnering with many other organizations, government and non-profit, we can deliver accurate and up-to-date information on programs and regulations that apply to agricultural producers. We also volunteer our time as Technical Advisors with the Environmental Farm Plan Company to assist producers with their questions and completing their own Farm Plans.

If you have questions on how to improve your impact on the environment, or on any of these management issues, don't hesitate to contact us. We are based out of the Lac Ste Anne County Office and can be reached, toll free, at **1-886-880-5722**.



Photo Credit: WCCG



Photo Credit: WCCG



Photo Credit: WCCG



Photo Credit: WCCG



Photo Credit: WCCG

3. Shelterbelt Trees

The Agricultural Service Board works in conjunction with the Prairie Farm Rehabilitation Association (PFRA) to promote the Shelterbelt Tree Program and Shelterbelt Enhancement Program to area farmers and producers. **The Shelterbelt Tree Program provides free seedlings to bona fide landowners and farmers with more than 39 acres of land.**

Applications for the program must be received at Indianhead, Saskatchewan by March 15th each year. Please visit http://www.agr.gc.ca/pfra/shelterbelt_e.htm for application form.

Acreage Trees

For owners that have less than 39 acres, trees can be purchased through Alberta Nurseries. To order direct visit www.marketland.net today! The trees must be ordered by March 15th each year.

Rocky Rapids Demonstration Plots

